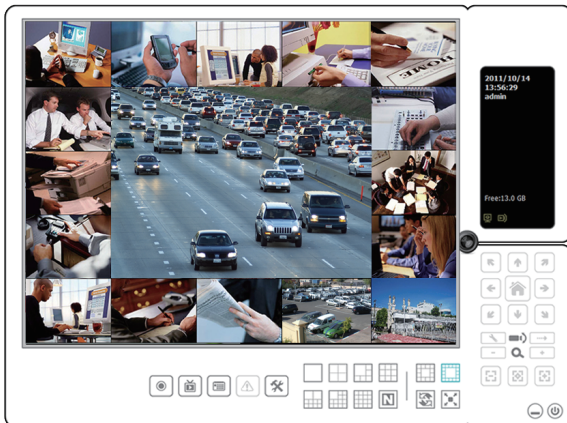


# ZAVIO CamGraba Network Video Recorder Software



- Support up to 32 Cameras
- Server/Client Design for Local and Remote Management
- Remote 4-channel Live View and Playback Simultaneously
- Motion Detection & Scheduled Recording

ZAVIO CamGraba, the free-bundled network video management software, provides video live viewing, recording and playback up to 32 cameras.

Working perfect with all ZAVIO network products, ZAVIO CamGraba is designed with reliable performance and easy-to-use features offering efficient video management solution for diverse small-to-mid-size IP surveillance applications.

- Free-bundled NVR software for viewing, recording, and playback
- Server/client design for local and remote management
- Supports up to 32 cameras
- Remote 4-channel live view and playback simultaneously
- Motion detection & scheduled recording
- Supports H.264/ MPEG-4/ MJPEG compression formats
- Multiple user access levels with password protection
- Powerful recording search function
- Supports PTZ camera control
- Compatible with all ZAVIO models, including VGA, 1.3 megapixel and 2 megapixel



- 4-channel playback

## Technical Specifications

Camera	
<b>Model</b>	Compatible with Zavio IP cameras
<b>Channels</b>	Support up to 32 channels live view
Video	
<b>Video compression</b>	Motion JPEG MPEG-4 Part 2 (ISO/IEC 14496-2) simple profile H.264 baseline profile
<b>Resolutions</b>	Supports connected IP camera resolutions (Excluding 160x120 and 320x240 resolution)
Audio	
<b>Audio streaming</b>	Two-way (full duplex)
<b>Audio compression</b>	G.711, u law, a law and AMR
Recording Server	
<b>Security</b>	Multiple user access levels with password protection
<b>Installation and setup</b>	Automatic camera discovery and effective camera management Initial setup wizard for first login Easy configuration wizards instead of setting page
<b>Account</b>	Configurable group authority and user information included for local and remote live view , playback and administration
Live View	
<b>Camera live view</b>	Flexible live view configuration of up to 32 cameras Manual Recoding, snapshot, talk and pause streaming via OSD control Status indicator Quickly enable/disable schedule, IVS, display options, audio options and sequence view
<b>Remote live view</b>	Support 4 channels remote live view
<b>Start menu</b>	Start monitor all Start recording schedule Open I/O control panel Lock system
<b>Grid layout</b>	Support 1, 4, 6, 9, 10, 13, 16, 17, 25, 36, 48, 49, 64 split screen
<b>PTZ support</b>	Control of PTZ camera Go to preset position and patrol directly 64 preset settings
<b>Setting items</b>	General; camera; I/O device; PTZ configuration Monitor display
Playback	
<b>Concurrent playback</b>	Support 4 channels playback
<b>Playback</b>	Controllable speed, A/B section playback, digital zoom in/out and image setup
<b>Remote playback</b>	Support 4 channels remote playback
<b>Record search</b>	Search for recording based on camera, type and date/time Timeline visualization Support search by events
<b>Support browser</b>	Windows Internet Explorer 6/7/8
<b>Export</b>	All video or A/B section video export in AVI, ASF, Original AVI format Preset save path

Events	
<b>Scheduled recording</b>	Schedule per camera allows customization of day mode, week mode and customized date recordings
<b>Logs</b>	System, audit and camera types with information, notice and alert levels Export & backup
<b>Motion detection</b>	Advanced camera-based motion detection with configurable recording condition
Backup	
<b>Maximum channels</b>	4 channels in date time search dialog
<b>Search dialog</b>	Date & time period; log viewer; select cameras
<b>Media</b>	CDROM; DVDROM; Hard disk(Local drive storage/ NAS remote storage/ Network drive remote storage)
System	
<b>Minimum system requirement</b>	Windows XP (32 bit) Windows Vista (32 bit) Windows 7 (32/64 bit) Windows server 2003 (32 bit) Windows server 2008 (32/64 bit)
<b>Minimum client computer requirement</b>	CPU: Intel Core 2 Duo E5300 or above (Intel Xeon recommended) or equivalent AMD RAM: 2GB
<b>Minimum server computer requirement</b>	CPU: Intel Core 2 Duo E5300 or above (Intel Xeon recommended) or equivalent AMD RAM: 2GB
General	
<b>Languages</b>	Bulgarian; Chinese (Traditional); Chinese(Simple); Czech; Danish; Dutch; German; Greek; English; Farsi; Finnish; French; Hebrew; Hungarian; Italian; Japanese; Korean; Norwegian; Polish; Portuguese (Brazil); Portuguese(Portugal); Romanian; Russian; Slovak; Slovenian; Spanish; Thai; Turkey;

